

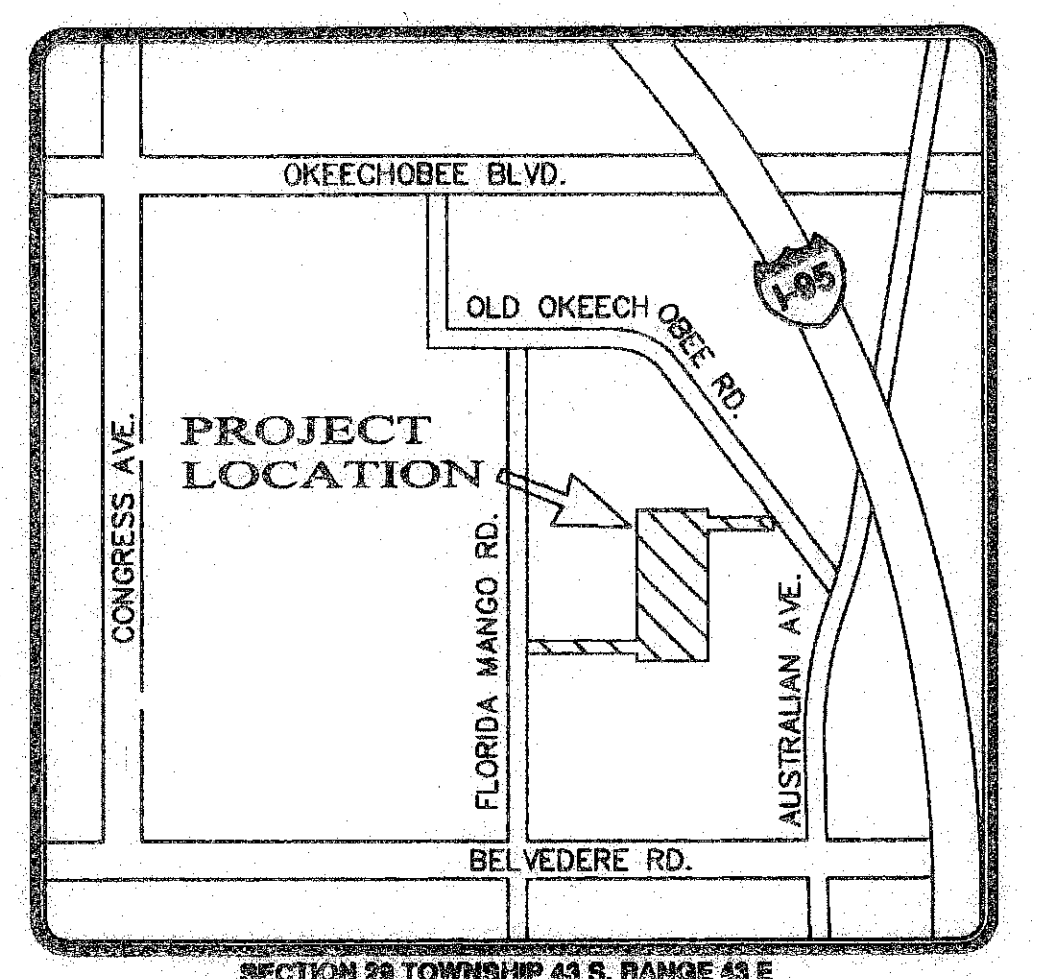
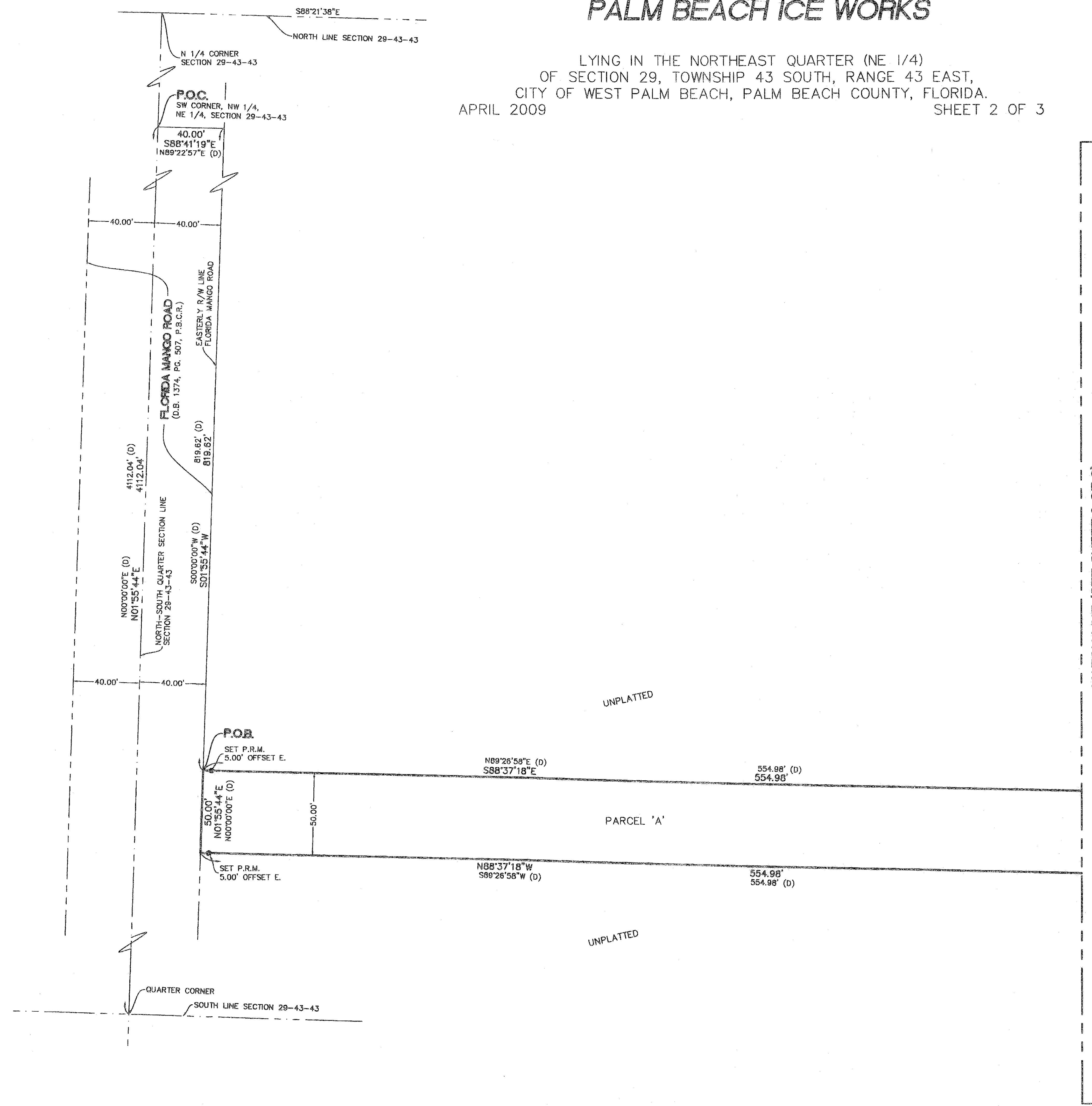
# PALM BEACH ICE WORKS

LYING IN THE NORTHEAST QUARTER (NE 1/4)  
 OF SECTION 29, TOWNSHIP 43 SOUTH, RANGE 43 EAST,  
 CITY OF WEST PALM BEACH, PALM BEACH COUNTY, FLORIDA.  
 APRIL 2009 SHEET 2 OF 3

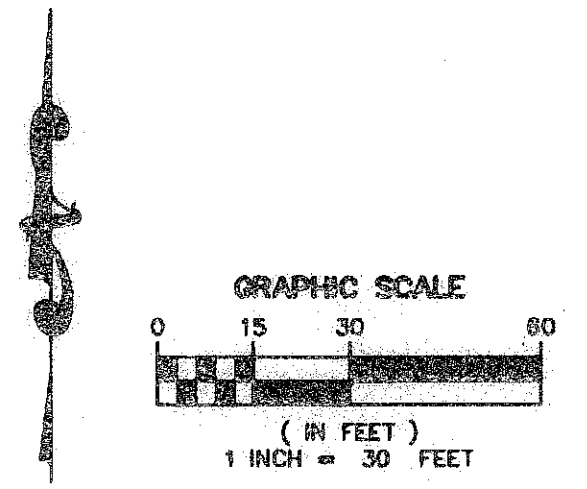
191

STATE OF FLORIDA  
 COUNTY OF PALM BEACH  
 This plat was filed for record  
 at \_\_\_\_\_ this \_\_\_\_\_  
 day of \_\_\_\_\_, 2009,  
 and duly recorded in Plat Book  
 \_\_\_\_\_ Pages \_\_\_\_\_ Through \_\_\_\_\_

SHARON R. BOCK  
 Clerk & Comptroller  
 By: \_\_\_\_\_



MATCH LINE (SEE SHEET 3 OF 3)



- LEGEND:  
 P.O.C. = POINT OF COMMENCEMENT  
 P.O.B. = POINT OF BEGINNING  
 O.R.B. = OFFICIAL RECORD BOOK  
 D.B. = DEED BOOK  
 PG. = PAGE  
 P.B.C.R. = PALM BEACH COUNTY RECORDS  
 R/W = RIGHT OF WAY  
 C = CENTER LINE  
 (D) = PER QUIT CLAIM DEED  
 (D.B. 23132, PG. 492, P.B.C.R.)  
 (L.E.) = LESS OUT PORTION PER QUIT CLAIM DEED  
 (D.B. 23132, PG. 492, P.B.C.R.)  
 (C) = CALCULATED  
 P.R.M. = INDICATES PERMANENT REFERENCE MONUMENT  
 (18" METAL ROD WITH ALUMINUM DISK IN  
 24" LONG (4"x4" SQUARE) CONCRETE)  
 LB6680 = LICENSED BUSINESS NUMBER 6680.

- NOTES:  
 \*\* 7.5' DRAINAGE EASEMENT  
 & 7.5' UTILITY EASEMENT PER  
 O.R.B. 2939, PG. 1899, P.B.C.R.  
 O.R.B. 2869, PG. 1412, P.B.C.R.  
 O.R.B. 2999, PG. 51, P.B.C.R.  
 O.R.B. 3113, PG. 68, P.B.C.R.  
 O.R.B. 3113, PG. 70, P.B.C.R.  
 O.R.B. 3101, PG. 1822, P.B.C.R.

SHEET INDEX:

TITLE PAGE SHEET 1 OF 3  
 MAP SHEET 2-3 OF 3

**MILLER LEGG**

Palm Beach Office: 2005 Vista Parkway - Suite 100  
 West Palm Beach, Florida - 33411-2719  
 561-868-1139 - Fax: 561-599-8108  
 www.millerlegg.com

Certificate of Authorization: LB6680